



OPUS
interiors



- Privately owned
- London based with National & International Coverage
- Fit out and refurbishment
- Over 70% repeat business from existing clients
- Direct operatives incl. joiners, carpenters, decorators and plasterers
- CAD facilities for general or detailed rod drawings
- Highly skilled, experienced and motivated staff
- Contracts: negotiated, traditional and Design & Build
- Sectors: retail, restaurants, hotels, leisure, and office fit-out

- Understanding client needs
- Professional teamwork
- High quality on-site management
- Direct labour resources
- Technical expertise
- 'Hands on' financial control
- Comprehensive planning & procurement procedures
- Site survey, production of setting out and construction drawings
- Director involvement from commencement through to completion





Retail Fit Out

- Concessions
- Designer Stores
- Fixturing
- Flagship Stores
- High Street Multiples
- Roll Outs
- Speciality Boutiques
- Travel Retail

Leisure

- Hotels
- Casinos
- Health Spas
- Sports Facilities
- Cinemas
- Bar & Cafes
- Fast Food Outlets
- Joinery
- Night Clubs
- Public Houses
- Restaurants

Commercial Fit Out

- Cellular
- Churn Work
- Furnishings
- Open Plan
- Receptions

Construction

- Residential
- Refurbishment
- New Build
- Listed Properties
- Flats





- Accors Hotels
- Amaya
- Après
- Atelier
- Bar Dion
- Barton Willmore Architects
- Benihana
- Big Chill Bar
- Birkenstock
- Buckingham Palace
- Café Zest
- Camino
- Cannons
- Chutney Mary
- Comptoir Libanais
- Crown Plaza Hotels
- D&D Restaurants
- DSquared2
- Four Hundred Rabbits
- Furla Handbags
- Goat Public House
- HMKM Designers
- House of Fraser
- J&K Aquatics
- Jarvis Hotels
- JOY
- Jubilee Market
- Just Cavalli
- Laithwaites
- London School of Economics
- Lulu Guinness
- Maison Martin Margelia
- Mary Ward Centre
- Masala Grill
- Metropolitan Restaurants
- Nandos
- Panzo
- Pentland Group
- Rustic Chic
- SCIN Exhibitions
- Selfridges
- Sheffield Park Hotel
- St John's Tavern
- Stretch Yoga
- Terence Trout
- The Mill
- The Natural Shoe Store
- The Tea Terrace (House of Fraser)
- Tods
- United Ramen
- Veeraswamy
- Vivat Bacchus
- Winchester Hotel





Camino Bankside, London

Working closely with the designers Blacksheep, OPUS had to strip out the whole of the unit and introduce an open mezzanine area for the full width of the unit with a new central staircase, feature front bar and general seating area to the ground floor. The design involved a polished concrete bar, which combined with the Moorish wall tiles, marble/timber tables and concrete floors. Under a tight programme, a new kitchen was introduced, the project incorporated new mechanical and electrical services throughout.

3000 ft²

Duration: 6 weeks



Comptoir Libanais Broadgate, London

This was our first fit out for this expanding Client and we could not have chosen a more challenging site, working in the new Broadgate hospitality development.

The look and feel of this Middle Eastern canteen reflected in their choice of Moorish ceramic wall/floor tiles combined with timber flooring, bold wall posters and simple wall shelving on brackets to display their mixture of food and general goods. A further combination of different finishes applied to the main feature counters complimented the simple eclectic mix of coloured furniture.

2000 ft²

Duration: 6 weeks





Four Hundred Rabbits **Nunhead**

The Client approached us to carry forward and help develop their expansion of the pizza chain. With three successful units, they had a clear idea of their requirements and as part of our remit we worked with them closely to maximize the value of their investment, staying within their tight budget.

The design involved the introduction of a front counter area to house the pizza oven and a rear counter for the sale of 'on tap' beers and wines. Using a number of different coloured wall tiles, peg boards and stencil wall art, this combined with a new resin floor and brightly coloured freestanding units, incorporating untreated ply shelving/tops.

1200 ft²

Duration: 4 weeks



House of Fraser Oxford Street and Victoria Street

This is perhaps OPUS's most challenging project in terms of a very small budget for a relatively large area. The floor finish was changed, the main/back counters were over clad, a feature screen utilising picture frames was introduced, minor alterations to the existing lighting and general decorations. The end result was a forty percent increase in sales and a very satisfied Client.

15000 ft²
Duration 2 weeks



Nandos Dalston

This was our first project for this established nationwide restaurant chain. Each site incorporates into the interior design some of the local influences and all are generally different, so in this instance we had a feature concrete counter, various timber wall and ceiling finishes and ceramic tiled floors. Lighting is a key feature with the clever use of large pendants and lighting sculptures to break up the general space. The works also involved extending the kitchen area to take deliveries and a complete makeover of the back of house rooms and associated toilets.

3500 ft²
Duration 5 weeks



Laithwaites

Vinopolis, Borough Market

Creation of their new flagship store within the existing brick vaulted warehouse building. Introduction of feature light rafts, wall/mid floor displays and feature fifteen metre long tasting table.

Duration 6 weeks



London School of Economics (LSE) Holborn, London

Make over of the existing leisure areas for the exclusive use of the students and staff. The design incorporates the use of feature ply wall panels, floor and wall finishes, improved lighting and contemporary furniture.

5000 ft²

Duration 6 weeks

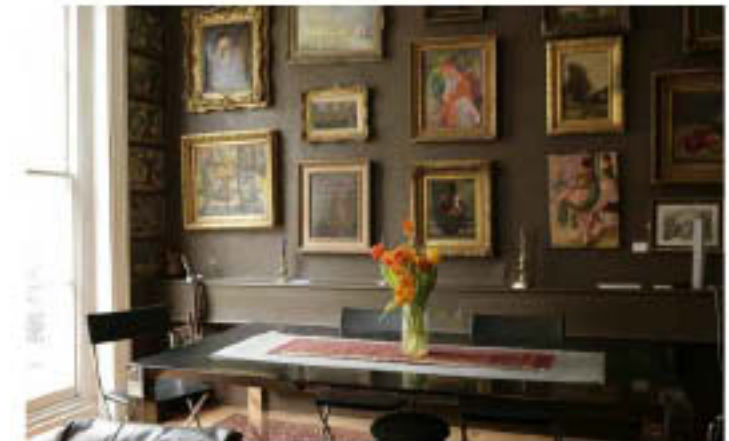


St John's Tavern London N19

OPUS were recently asked to refurbish this landmark public house, to help develop the food offer and bring the building up to date. The two main counters to the public and restaurant areas were refurbished and zinc trims introduced, along with new steel wine racks and shelving to the back bar areas. Toilets were refurbished and a new kitchen created in the public bar area to compliment the restaurant's main kitchen. A major feature was the opening up and introduction of more light into the restaurant with glazed roof lights to the adjacent back bar areas.

3000 ft²

Duration: 5 weeks







Birkenstock Covent Garden

After initially infilling the existing staircase opening to the basement, the floor was levelled and a new resin feature floor installed. Perimeter wall linings surrounded new joinery shoe display boxes, which combined with the new ceiling and built in LED recessed linear lighting.

Area 1350 ft²

Duration 5 weeks



DSquared2 Harrods

OPUS carried out the fit out of the concession for this high end, current retail brand. Working closely with Harrods, the design incorporated concrete based feature panels fixed to powder coated metal framework, with dark bespoke freestanding joinery. New lighting and services alterations were coordinated with the Harrods in-house contractors and all approvals gained before installation. The finished product provides a very contemporary atmospheric feeling and displays the clothing to their best and has become a very recognised destination.

Area: 800 ft²

Duration 3 weeks



Furla 221 Regent Street, London W1

A very demanding project with a wide variety of complex finishes and hidden services to both the ground and basement floors. Designed by one of the major design practices, we had to assemble the Client supplied fixtures which incorporated brass and glass materials with built in LED lighting.

Approximately 3,200 ft²

Duration 9 weeks



Lulu Guinness The Royal Exchange, London

This established Client required very high quality fixturing and general finishes, all constrained within a small retail space. Illuminated shelving, combined with high gloss lacquered wall panels, full height mirrors and suspended feature lighting create a wonderful environment to display or purchase the products.

1100 ft2

Duration 3 weeks





The Natural Shoe Store Covent Garden, London, W1

Having completed the new Birkenstock store towards the end of 2014, we were asked to next fit out its sister brand in the original Birkenstock store. The designers wanted to create a clean light environment with feature oak shelving on dark metal framework, all sitting on a new light timber floor. Budget restrictions meant that we had to tidy up the unusual full height glass shopfront and provide new external glazed access door hung on existing curved 'I' section track to open up the front of the unit.

1100 ft²
Duration 5 weeks





GEMS Education St. Alban's House, Haymarket, London SW1

OPUS was asked to provide a design and build solution to this education companies head office requirements. The former Burberry offices were stripped out and new floor and wall finishes introduced to provide a blank canvas. Bespoke items of joinery and bold graphics were introduced to define the various elements, including new glass partitions with associated mechanical and electrical alterations.

Area 11,000 ft²
Duration 8 weeks



Mary Ward Centre **London**

Phase 1 of the grade 2 listed education establishment involved the fitting out works in various areas, but mainly the provision of the new feature mezzanine area, constructed using end grain ply. Phase 2 was the external decorations and repairs and reinstatement of damaged ceilings and acoustic works.

Overall areas 16,000 ft²

Duration 6 weeks per phase



The Mill Windmill Street, Soho, London

We have experience of working for The Mill on a number of projects from the fit out of whole floors to one off maintenance or smaller works. The main fit out created a contemporary space within the mansard top floor. Due to the Clients requirements for film editing, a large part of the project was the installation of the complex services, all run in galvanised perimeter box trunking. The reception area had to make a statement and this combined with the provision of new meeting rooms and tea points.

Duration 6 weeks

Letters of recommendation



Dear All,

On behalf of the trustees and staff of LSE Students' Union I would like to formally thank you and everyone for the transformation you achieved in our spaces. Your team played a significant role in this transformation displaying a strong work ethic, can do approach, eye for style, touch of class and sense of humour (especially Andrews texts & emails)

Our gratitude to Andrew who was ever understanding with his figures and sums!

Please also pass on a special thanks to Evan and Kerry for their extremely helpful and positive approach to working with us. They deserve high praise for their efforts.

The feedback on the refurbishment has been overwhelmingly positive with students, staff and guests giving positive comment, even an alumnus and recent guest speaker at LSE, Lord Saatchi described it as 'wonderful'. The LSE Students' Union newspaper has covered the refurbishment works too, take a look; <http://thebeaveronline.co.uk/2009/09/28/union-social-spaces-get-200000-makeover/>

If you would like a quote or any words for your website please let me know and I will provide you with something you can use.

Thanks again and well done to you and all the contractors involved in this project.

Ronan Haughton

Projects Coordinator
London School of Economics and Political Science Students' Union



dadreal.com

19th February 2010

Dear Andrew

Can I personally thank you and your team for the excellent service provided by your company during the successful completion of this demanding project.

I appreciate that you picked this project up during the 'slow' period, with all its implications, and that the designs kept changing right up to the last couple of weeks of the project.

Lithwhites are very impressed with the final quality and detailing of your product, and I am sure that this will materialise in future work between all relevant parties.

Thanks again.

Yours sincerely,

Alistair Corrie
Chief Executive
+44 (0)7800 912 406

Subject: FW: CONTACT DETAILS
Date: Thu, 3 Feb 2011 14:38:36 +0000
From: DMcilroy@hof.co.uk
To: andrew.mullett@hotmail.co.uk
Email below FYI
Regards,
David,
David McIlroy
HOUSE OF FRASER
Tel: 07920 757575
Email: dmcilroy@hof.co.uk

From: McIlroy, David
Sent: 03 February 2011 14:37
To: Philip Contini; 'Enda McShane'; 'DARAGH'; 'India'; 'Richard Cheshire'; 'Nick Robinson'; 'baytree@raspberrysaffron.com'; 'Andy aldrich'; 'Marcello Distefano'; 'Gary Thomas'
Subject: CONTACT DETAILS
Dear all,
Contact details for Andrew Mullett below which may be of interest to you.
(Andrew has worked on projects for House of Fraser/Brand Partners in the past and has an excellent reputation).
Andrew specialises in the design and full fit out of hospitality businesses front and back of house.

Andrew Mullett
OPUS Group
Mobile 07801 991962

Regards,
David,
David McIlroy
HOUSE OF FRASER
Tel: 07920 757575
Email: dmcilroy@hof.co.uk

Eagle House · 167 City Road · London EC1V 1AW
Tel: 020 3356 9661
www.opus-projects.co.uk

Please contact Andrew Mullett on andrew.mullett@opus-projects.co.uk.

RESTAURANTS · RETAIL · HOTELS · COMMERCIAL · RESIDENTIAL

